



Multiplexer unit

D200S

DESCRIPTION

- Unit for connecting up to 8 SYLVAC capacitive probes and visualising the results on a PC (software included) or exporting the data.
- Housing made of aluminium profile and ABS plastic that can be placed vertically or horizontally
- 8 inputs for capacitive sensors P5, P10 and P25
- I/O terminal block with opto-coupled inputs/outputs
- Free software to view up to 24 channels simultaneously, create channel combinations, perform dynamic measurements or create sequences.
- Up to 3 units can be connected to the software, so that up to 24 probe inputs can be used.
- Possibility to connect a D110V unit for lifting the vacuum probes
- 2 connectors for optional pedal 904-4101
- USB and RS232 data outputs
- IP50 protection



Output cable USB to USB (804-1210) or output cable RS232 to RS232 (925-5609)

8 inputs for Sylvac probes



Software allowing the treatment of up to 24 channels simultaneously (bargraph)

Tolerance indicators

Connection by USB (2x) or RS232 (1x)

Opto-coupled digital output rack

Connection by USB (2x) or RS232 (1x)



H

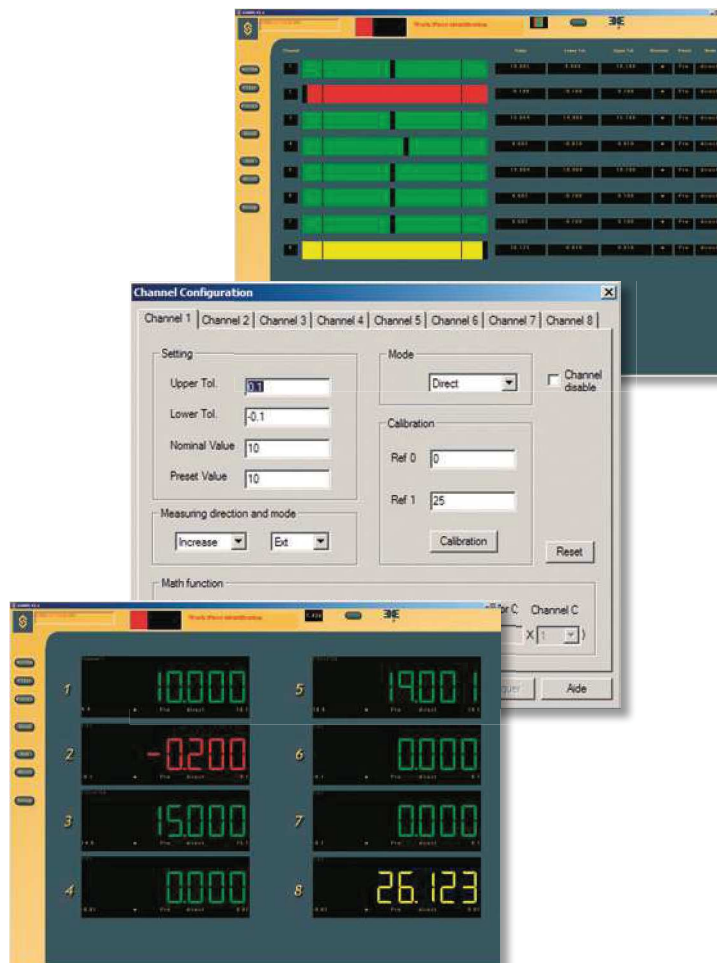


Multiplexer unit

D200S

DISPLAY/SOFTWARE

- Selection of unit mm/inch**
- Selection of resolution**
- PRESET function**
- Sending Data**
- Tolerance indicators with LED**
- Min/Max/Delta display**
- Individual selection of measuring direction**
- Switchable digital/bargraph display**
- Global tolerance status of the measured part**
- Programming channels screen**
- Sending Sequences of Data**
- External contact configuration**
- Electrical external contact configuration**
- Open / Save configurations**
- Transfer configuration to D200S unit**



TECHNICAL SPECIFICATIONS

		804-1200
Type		D200S
Max. Error	µm	P2 : 1.5 / P5 : 1.6 / P10 : 1.6 / P25 : 1.9
Repeatability	µm	P2 : 0.2 / P5 : 0.2 / P10 : 0.2 / P25 : 0.2
Frequency of measurement		200 values /second
Overall dimensions	mm	304 x 171 x 61
Weight	kg	1.2
Case		Aluminium profile, Terlend plastic, ABS and aluminium vanished
Protection rating according to IEC 60529		IP50
Output data		USB / RS232 ¹⁾
Programmable by PC		•

¹⁾ see cables chapter

Multiplexer unit

D200S

STANDARD DELIVERY

- Instrument according to technical specifications
- Feet for use in vertical position
- Charging unit according to country (904-4200)
- PC Connection cable type USB (804-1210)
- CD with D200S software
- Instruction manual

APPLICATIONS



Dynamic measurement of several diameters, (OD and ID) of a shaft



Capacitive probes connected to a D200S.



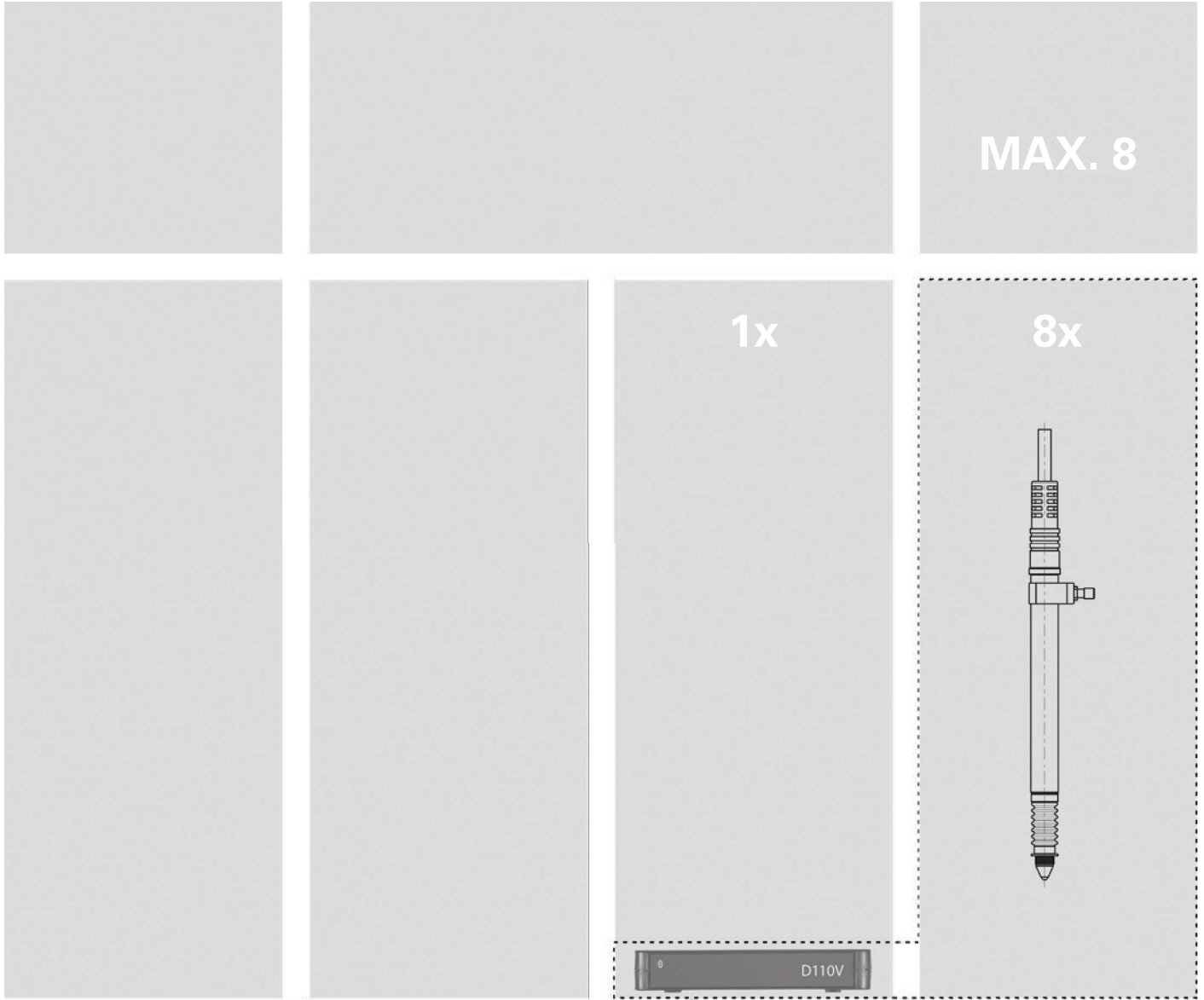
Multi-gauging application



Multiplexer unit

D200S

POSSIBILITIES OF D110V PNEUMATIC LIFTER



H



Multiplexer unit

D200S

POSSIBILITIES OF CONNECTION

MAX. 8

8x



P2...P25

MAX. 8

8x



P2...P25

MAX. 8

8x



P2...P25



H

