



Multiplexer unit

M-Bus

DESCRIPTION

- Interfacing modules for connecting Sylvac instruments (hand instruments and probes) as well as instruments of other brands to the D300S and D400S units, to a computer (Sylcom Advanced and Pro) or to a PLC
- Manufactured from an anodised aluminium profile for mounting on a DIN rail, our M-Bus modules are suitable for use in harsh industrial environments.
- RS485 data output
- The following modules are available:

804-2160 MB-RS module

Master module for communication with the computer or PLC via USB or RS232.

804-2104 Module MB-4C

Module with 4 connectors for Sylvac capacitive probes.

804-2107 Module MB-4I / 804-2108 Module MB-8I

Module with 4 or 8 connectors for Sylvac inductive probes. These modules are also suitable for Half-Bridge probes from other manufacturers using the Tesa protocol (Mahr, Dong-Do, Tesa, Peter Hirt, etc.).

804-2122 Module MB-2S

Module with 2 connectors for Heindenhein incremental probes 11µmA/1VPP .

804-2190 Module MB-AG

Module with one inlet for tampon or air ring, supplied with a set of 6 different throttles.

804-2140 MB-PS module

Additional power supply module that may be required when a large number of M-BUS modules are connected together.

804-2130 MB-I/O module

Module with 8 opto-coupled inputs/outputs for communication with a PLC or peripherals such as an alarm signal. It is possible to connect several I/O modules in order to have up to 32 inputs/ outputs.

804-2105 Module MB-4P

Module with 4 connectors type M8 for Sylvac P12D digital probe.

804-2111 Module MB-1D / 804-2114 Module MB-4D

Module with 1 or 4 Digimatic type connectors for Mitutoyo instruments and instruments of other Digimatic compatible brands.

804-2180 MB-BT module

Module for connecting 8 Sylvac Smart Bluetooth® instruments (only compatible with D400S unit).

804-2170 MB-TP module

Module with one input for a thermocouple or PT100 temperature sensor/probe.

804-21xx MB-NET module

Module with Ethernet connector to transfer values to a server (only compatible with D400S unit).



Multiplexer units M-Bus

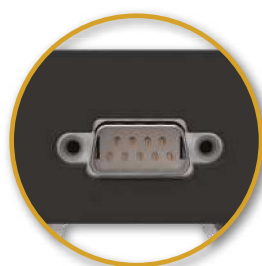


Multiplexer unit

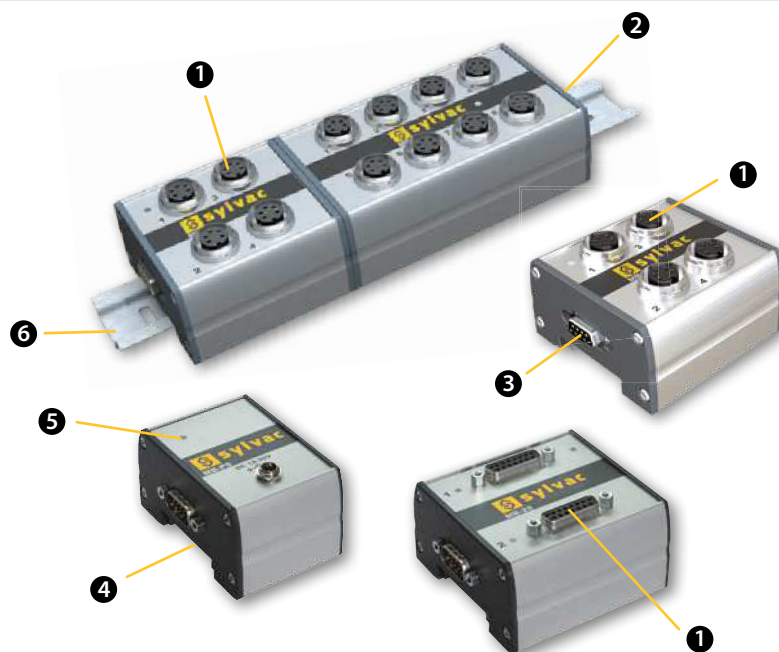
M-Bus

HARDWARE DESCRIPTION

- ❶ Probes input
- ❷ M-Bus input
- ❸ M-Bus output
- ❹ DIN mounting groove
- ❺ LED / Power module
- ❻ DIN rail



Output cable RS485 to RS485 (925-5609)



TECHNICAL SPECIFICATIONS

	804-2104	804-2108	804-2122	804-2114	804-2111	804-2107	804-2105
Modele	MB-4C	MB-8i	MB-2S	MB-4D	MB-1D	MB-4i	MB-4P
Instrument type	Sylvac capacitive probes	Inductive ¹⁾	Heidenhain probes (11µmA/1VPP)	Digimatic		Inductive ¹⁾	Probes P12D
Compatibility	D300S & D400S						
Dimensions (L x h x w) mm	107x42x74	131x44x74	82x43x74	107x39x74	52x39x74	107x39x74	107x42x74
Weight kg	0.2	0.3	0.2	0.2	0.1	0.2	0.2
Inputs	4	8	2	4	1	4	4
Case	Anodized aluminium profile						
Output data	RS 485						

¹⁾ Half-bridge: see www.sylvac.ch for information on compatibility



Multiplexer unit

M-Bus

TECHNICAL SPECIFICATIONS

	804-2130	804-2140	804-2160	804-2170	804-2180	804-2190	804-21xx
Modele	MB-IO	MB-PS	MB-RS	MB-TP	MB-BT	MB-AG	MB-NET
Instrument type	PLC I/O	Power-Supply	Computer	Temperature sensor input PT100 and Thermocouple	Instruments with Bluetooth® wireless technology	Plug gauges and Air gauges	Ethernet connector for server sending
Compatibility	D300S & D400S			D400S			
Dimensions (L x h x w) mm	82x39x74	52x42x74	82x39x74	52x51x74	52x39x74	52x64x74	52x64x74
Weight kg	0.2	0.2	0.2	0.1	0.1	0.15	0.15
Inputs	8	12-30 VDC	254	1 / 1	8	1	1
Case	Anodized aluminium profile						
Output data	RS 485						



MB-4C



MB-8i



MB-2S



MB-4D



MB-8D



MB-4P



MB-IO



MB-PS



MB-RS



MB-TP



MB-BT



MB-AG

STANDARD DELIVERY

- M-Bus module according to technical specifications
- Instruction manual



Multiplexer unit

M-Bus

APPLICATIONS



Probes connection through M-BUS inputs



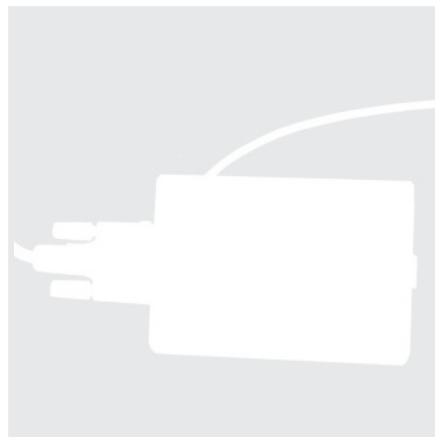
Probes connection on PC through MB-RS



Probes and indicators connection through M-BUS inputs



Probes connection on a D300S through D302 multiplexer units

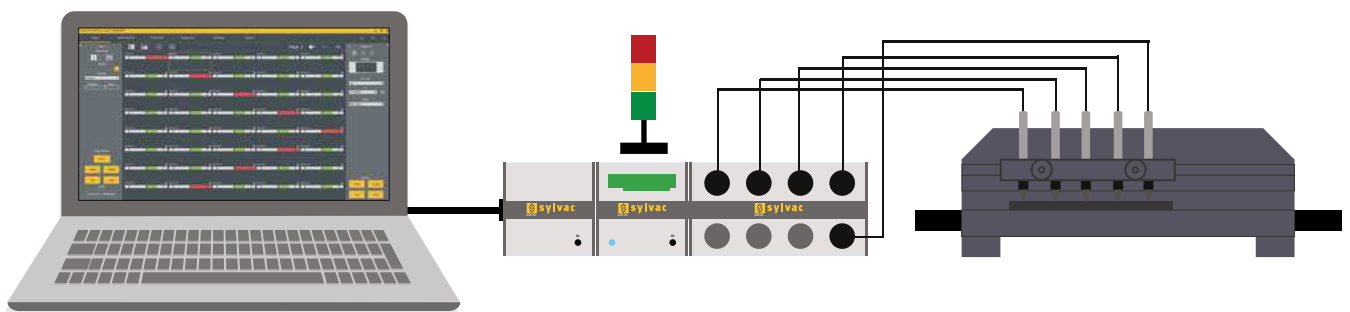


Digimatic instruments connected to a MB-4D



Probes connected to a MB-8i

H



Connection of probes via Mbus on Sylcom