



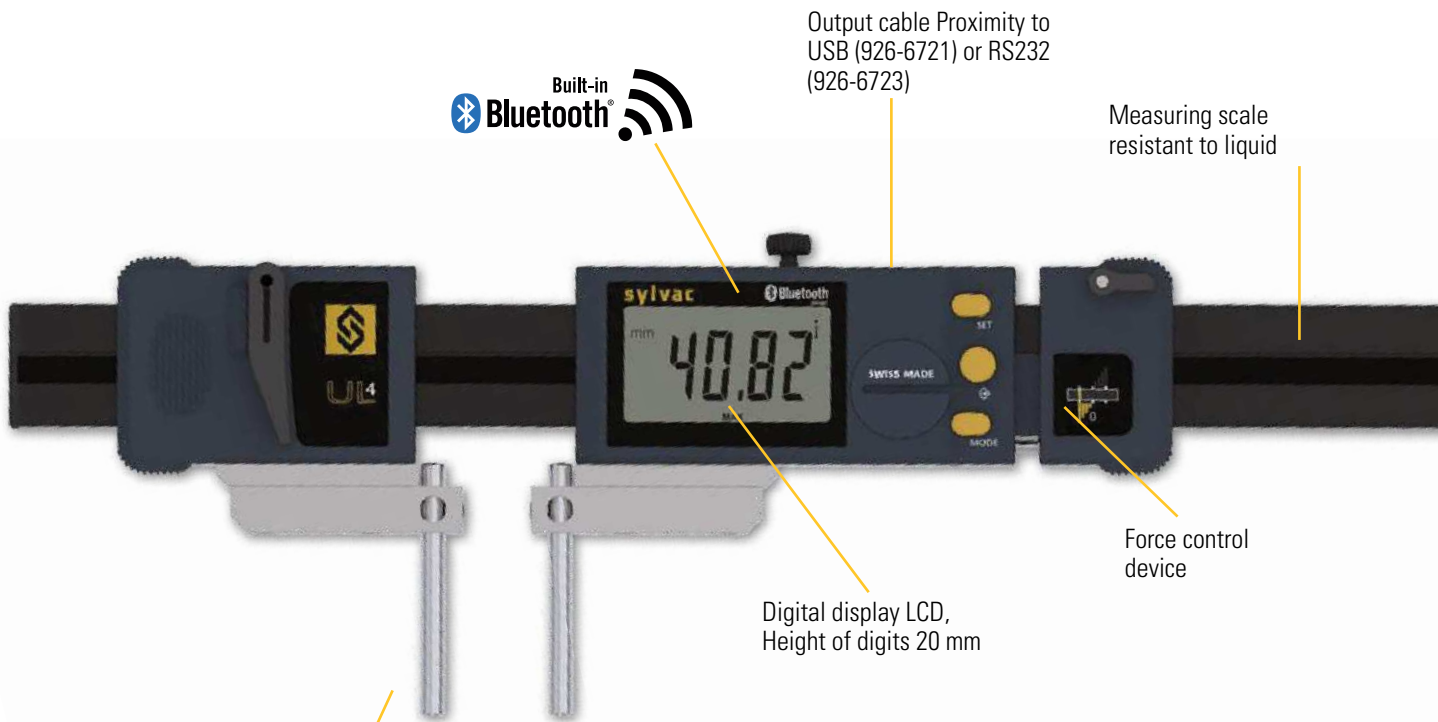
# Ultra light caliper

ULH4

## DESCRIPTION

- Ultra-light, large universal instrument with integrated Bluetooth® system
- Frame made of special aluminium profile reinforced with 4 stainless steel guide rods
- New XXL display unit with digits 20 mm high
- Three buttons, including the central button with selectable favourite function
- Measuring force control device
- Supplied with interchangeable measuring keys with hard metal pins Ø 8 x 80 mm
- Numerous other measuring keys available as options
- Lever-lockable movable left jaw
- Additional data output Proximity
- Measuring range 400 to 3000 mm
- Protection class IP67

C



ISO 13385-1

Interchangeable measuring keys with hard metal pins Ø 8 x 80 mm

**SWISS MADE**

Built-in Bluetooth®

PROXIMITY

WATER RESISTANT

**IP67**

## Interchangeable keys

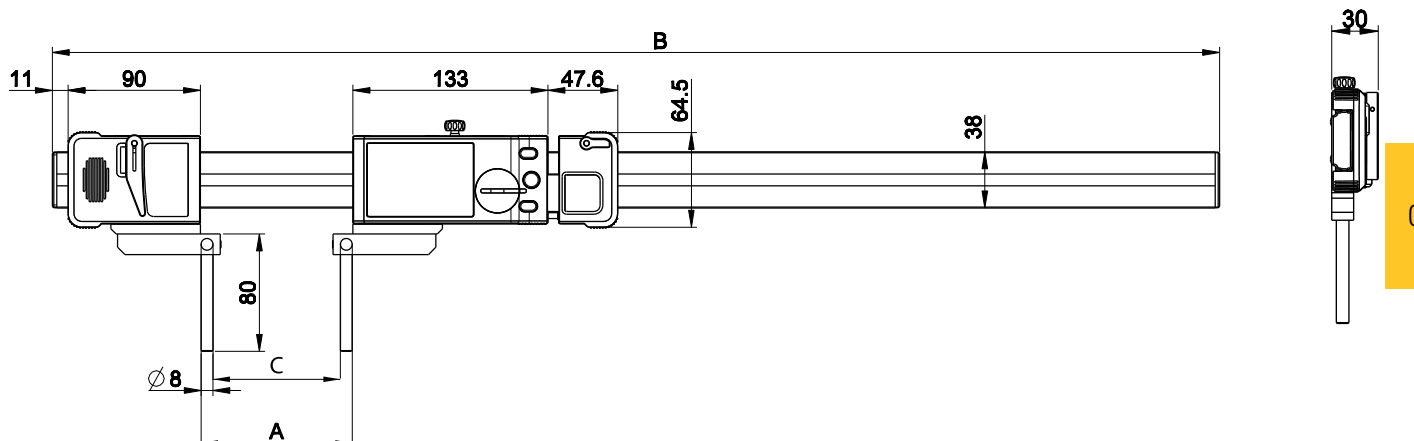




# Ultra light caliper

# UL H4

## DIMENSIONAL DRAWING



## TECHNICAL SPECIFICATIONS

		811-8040	811-8060	811-8100	811-8150	811-8200	811-8250	811-8300	
Model	mm	400	600	1000	1500	2000	2500	3000	
Max. Error	µm	30	40	50	90	120	150	200	
Repeatability	µm	20				30			
Resolution	mm	0.01							
A	mm	26-480	26-685	26-1095	26-1610	26-2125	26-2640	26-3155	
C	mm	10-464	10-669	10-1079	10-1594	10-2109	10-2624	10-3139	
B	mm	796	1001	1411	1926	2441	2956	3471	
Measuring Force	N	7.5 - 11.5 (±20%)							
Output data		Bluetooth® wireless technology* / RS232 / USB							
IP67 Protection		●							
Preset max.		±9999.99 mm / ±399.9995 IN							
Weight	kg	1.1	1.2	1.5	1.9	2.2	2.5	2.9	
Setting by PC		●							
2 references		●							
Min/Max function		●							
Tolerance limit indicators		●							

\* Up to 8 instruments connected per dongle #981-7100

# Ultra light caliper

UL4

STANDARD DELIVERY



### UL4 Standard

- Instrument according to technical specifications
- Lithium battery CR2477 included
- Calibration certificate for UL up to 3000mm
- Upper internal measurement anvil (811-2323 - 2pcs)
- Universal base 811-2301
- Instruction manual



### UL4 Special Jaws Type A

- Instrument according to technical specifications
- Lithium battery CR2477 included
- Special long jaws Type A (811-2316-99 or 811-2317-99)
- Length of jaws to specify when order (max. 400mm)
- Instruction manual



### UL4 Special Jaws Type C

- Instrument according to technical specifications
- Lithium battery CR2477 included
- Special long jaws Type C (811-2319-99)
- Length of jaws to specify when order (max. 300mm)
- Instruction manual

C



# Ultra light caliper

STANDARD DELIVERY



## ULH4

- Instrument according to technical specifications
- Lithium battery CR2477 included
- Calibration certificate for UL up to 3000mm
- Universal base 811-2301
- Anvil holder 811-2302
- Long cylindrical anvil  $\varnothing 8 \times 80$ mm (811-2324)
- Instruction manual



## ULV4

- Instrument according to technical specifications
- Lithium battery CR2477 included
- Long cylindrical anvil  $\varnothing 8 \times 80$ mm (811-2324)
- Bridge 400mm or 600mm
- Instruction manual



## ULD4

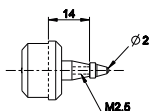
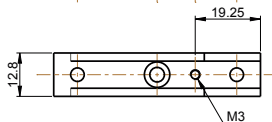
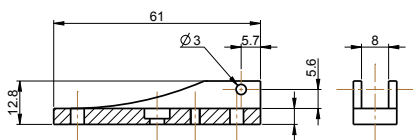
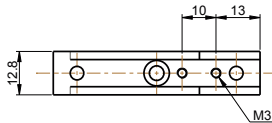
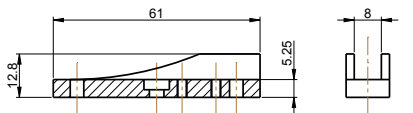
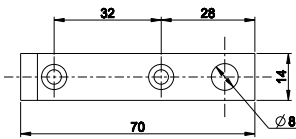
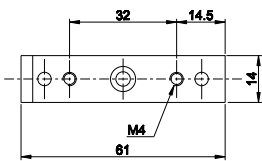
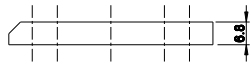
- Instrument according to technical specifications
- Lithium battery CR2477 included
- Driving shaft
- Instruction manual



# Ultra light caliper

## ACCESSORIES

C



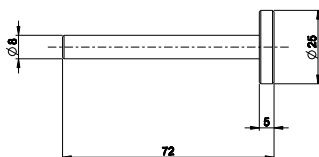
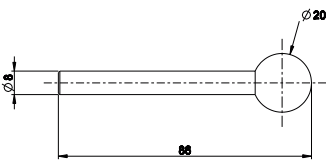
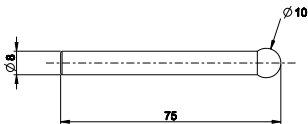
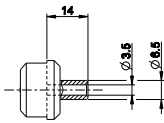
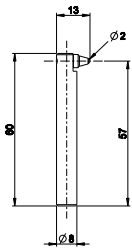
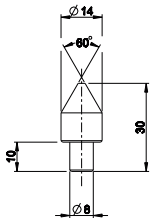
		UL4	UL H4	ULV4	UL D4
<b>811-2301</b>	Universal base (2 pieces)	●	●		
<b>811-2302</b>	Ø8 Anvil holder (2 pieces, to combine with 811-2301)	●	●		
<b>811-2303</b>	Accessories holder (2 different pieces)	●	●		
<b>811-2305</b>	Support with int. thread M 2.5 (2 pieces)	●			

See also cables chapter



# Ultra light caliper

## ACCESSORIES



		UL4	UL H4	ULV4	UL D4
<b>811-2307</b>	Inserts in hardened steel, cone 60° for bore clearance measurement > 10 mm, (2 pieces)	●	●		
<b>811-2309</b>	Holder for dial gauge contact points for internal groove measurement, (2 pieces)	●	●		
<b>811-2304</b>	Thread anvils holders (2 pieces)	●			
<b>811-2310</b>	Anvil Ø10mm (2 pieces)	●	●		
<b>811-2311</b>	Anvil Ø20mm (2 pieces)	●	●		
<b>811-2312</b>	Anvil Ø25x5mm (2 pieces)	●	●		
<b>811-6306</b>	Wooden box for UL4 400 and 600mm	●	●		
<b>811-6310</b>	Wooden box for UL4 1000mm	●	●		
<b>811-6315</b>	Wooden box for UL4 1500mm	●	●		

C

See also cables chapter



# Ultra light caliper

## ACCESSORIES

C



		UL4	UL H4	ULV4	UL D4
<b>811-2322</b>	Lower internal anvil (2 pieces)	●	●		
<b>811-2323</b>	Upper internal measurement anvil (2 pieces)* (to combine with 811.2303)	●	●		
<b>811-2324</b>	Long cylindrical anvil Ø8x80mm (2 pieces) (to combine with 811-2302 & 811-2301)	●	●		
<b>811-2325</b>	Cylindrical anvil Ø8x30mm (2 pieces)	●	●		

## APPLICATIONS



Internal measure with UL4



External measure with UL4

