



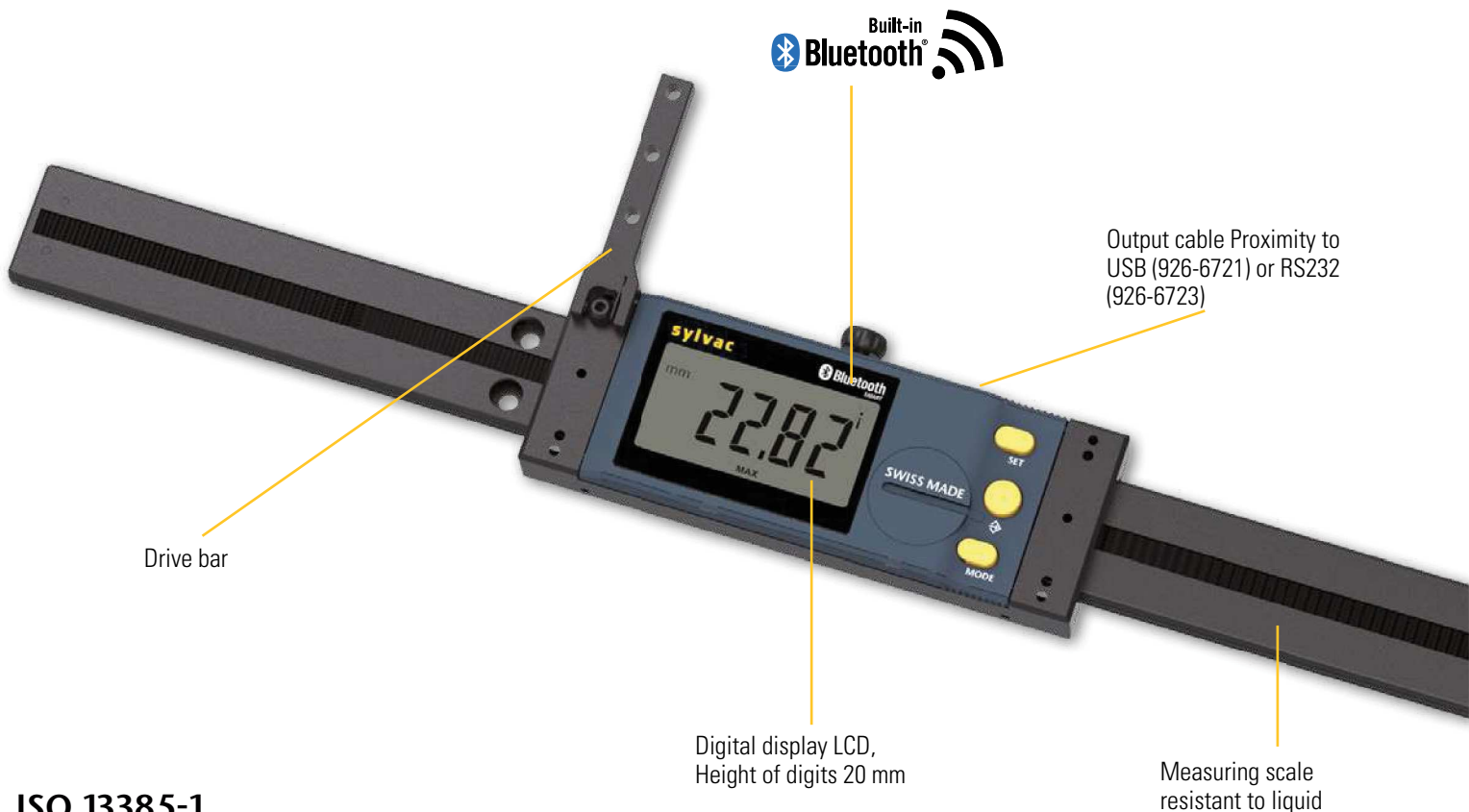
# Ultra light digital scale

UL D4

## DESCRIPTION

- Ultra-light, large linear ruler with integrated Bluetooth® system
- Frame made of special aluminium profile reinforced with 4 stainless steel guide rods with fixing holes
- New XXL display unit with digits 20 mm high
- Three buttons, including the central button with selectable favourite function
- Supplied with a drive bar that can be positioned at the top or bottom of the display.
- Additional data output Proximity
- Measuring range 1000 and 3000 mm
- On request, several rulers can be joined together to increase the measuring range.
- Protection class IP67

C



ISO 13385-1

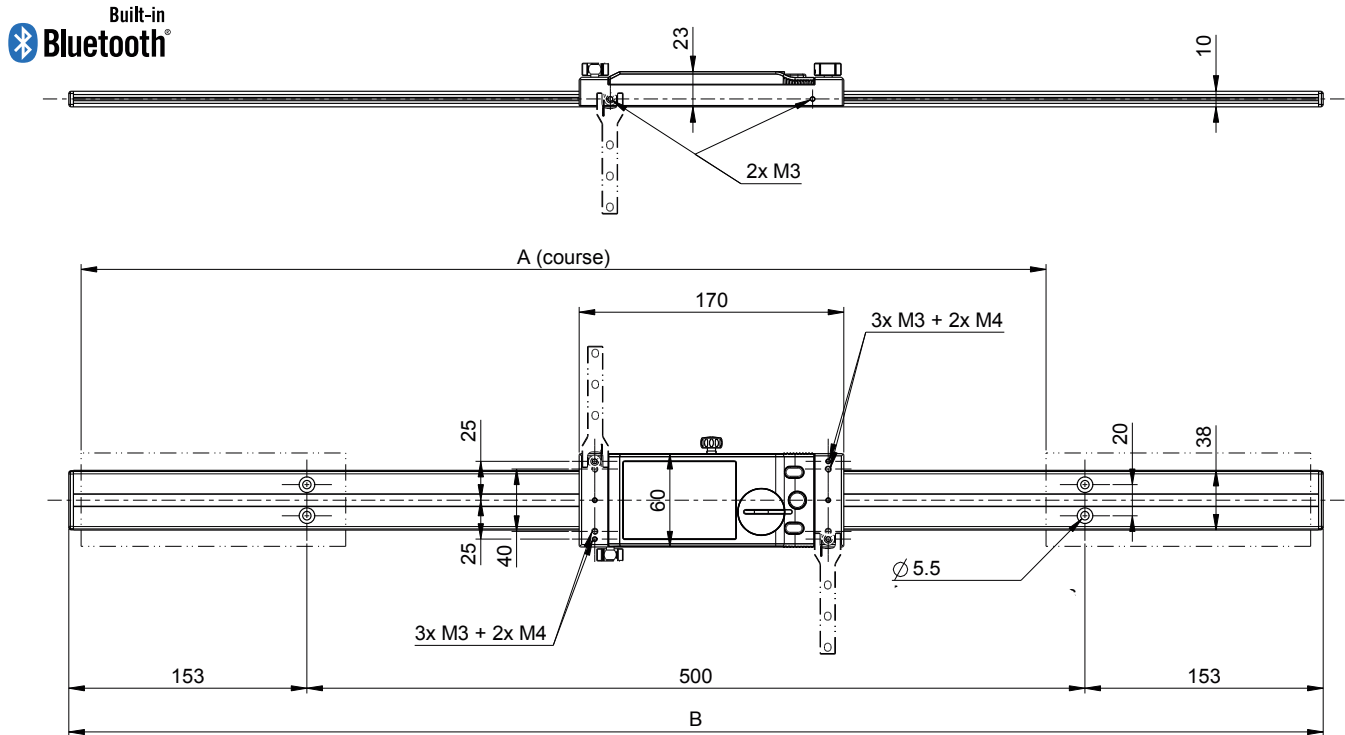




# Ultra light digital scale

# UL D4

## DIMENSIONAL DRAWING



## TECHNICAL SPECIFICATIONS

		814-1510	814-1515	814-1520	814-1525	814-1530
Model	mm	1000	1500	2000	2500	3000
Max. Error	µm	60	90	120	150	200
Repeatability	µm	20				
Resolution	mm	0.01				
A	mm	0 - 1120	0 - 1620	0 - 2120	0 - 2620	0 - 3120
B	mm	1306	1806	2306	2806	3306
Number range of raws		3	4	5	6	7
Output data		Bluetooth® wireless technology* / RS232 / USB				
IP67 Protection		●				
Preset max.		±9999.99 mm / ±399.9995 IN				
Weight	kg	1.2	1.5	1.8	2.2	2.5
Setting by PC		●				
2 references		●				
Min/Max function		●				
Tolerance limit indicators		●				

\* Up to 8 instruments connected per dongle #981-7100

C

# Ultra light caliper

UL4

STANDARD DELIVERY



### UL4 Standard

- Instrument according to technical specifications
- Lithium battery CR2477 included
- Calibration certificate for UL up to 3000mm
- Upper internal measurement anvil (811-2323 - 2pcs)
- Universal base 811-2301
- Instruction manual



### UL4 Special Jaws Type A

- Instrument according to technical specifications
- Lithium battery CR2477 included
- Special long jaws Type A (811-2316-99 or 811-2317-99)
- Length of jaws to specify when order (max. 400mm)
- Instruction manual



### UL4 Special Jaws Type C

- Instrument according to technical specifications
- Lithium battery CR2477 included
- Special long jaws Type C (811-2319-99)
- Length of jaws to specify when order (max. 300mm)
- Instruction manual

C



# Ultra light caliper

STANDARD DELIVERY



## ULH4

- Instrument according to technical specifications
- Lithium battery CR2477 included
- Calibration certificate for UL up to 3000mm
- Universal base 811-2301
- Anvil holder 811-2302
- Long cylindrical anvil  $\varnothing 8 \times 80$ mm (811-2324)
- Instruction manual



## ULV4

- Instrument according to technical specifications
- Lithium battery CR2477 included
- Long cylindrical anvil  $\varnothing 8 \times 80$ mm (811-2324)
- Bridge 400mm or 600mm
- Instruction manual



## ULD4

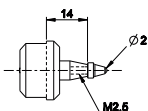
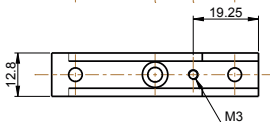
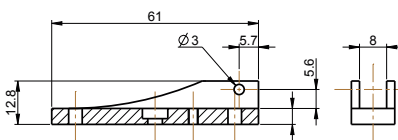
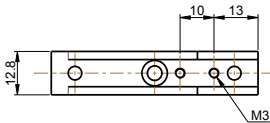
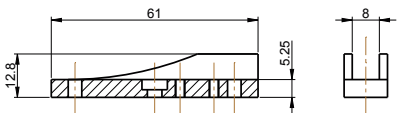
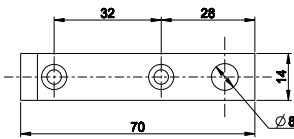
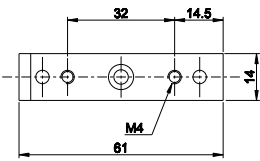
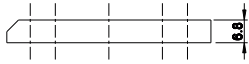
- Instrument according to technical specifications
- Lithium battery CR2477 included
- Driving shaft
- Instruction manual



# Ultra light caliper

## ACCESSORIES

C



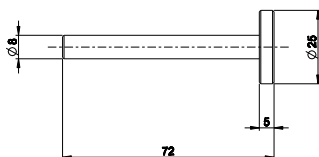
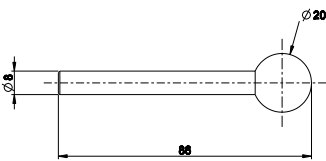
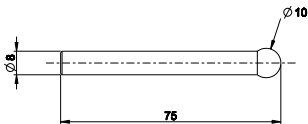
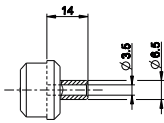
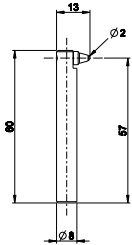
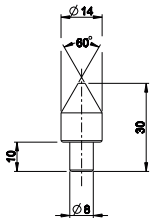
		UL4	UL H4	ULV4	UL D4
<b>811-2301</b>	Universal base (2 pieces)	●	●		
<b>811-2302</b>	Ø8 Anvil holder (2 pieces, to combine with 811-2301)	●	●		
<b>811-2303</b>	Accessories holder (2 different pieces)	●	●		
<b>811-2305</b>	Support with int. thread M 2.5 (2 pieces)	●			

See also cables chapter



# Ultra light caliper

## ACCESSORIES



		UL4	UL H4	ULV4	UL D4
<b>811-2307</b>	Inserts in hardened steel, cone 60° for bore clearance measurement > 10 mm, (2 pieces)	●	●		
<b>811-2309</b>	Holder for dial gauge contact points for internal groove measurement, (2 pieces)	●	●		
<b>811-2304</b>	Thread anvils holders (2 pieces)	●			
<b>811-2310</b>	Anvil Ø10mm (2 pieces)	●	●		
<b>811-2311</b>	Anvil Ø20mm (2 pieces)	●	●		
<b>811-2312</b>	Anvil Ø25x5mm (2 pieces)	●	●		
<b>811-6306</b>	Wooden box for UL4 400 and 600mm	●	●		
<b>811-6310</b>	Wooden box for UL4 1000mm	●	●		
<b>811-6315</b>	Wooden box for UL4 1500mm	●	●		

C

See also cables chapter



# Ultra light caliper

## ACCESSORIES



		UL4	UL H4	ULV4	UL D4
<b>811-2322</b>	Lower internal anvil (2 pieces)	●	●		
<b>811-2323</b>	Upper internal measurement anvil (2 pieces)* (to combine with 811.2303)	●	●		
<b>811-2324</b>	Long cylindrical anvil Ø8x80mm (2 pieces) (to combine with 811-2302 & 811-2301)	●	●		
<b>811-2325</b>	Cylindrical anvil Ø8x30mm (2 pieces)	●	●		

## APPLICATIONS



Internal measure with UL4



External measure with UL4

