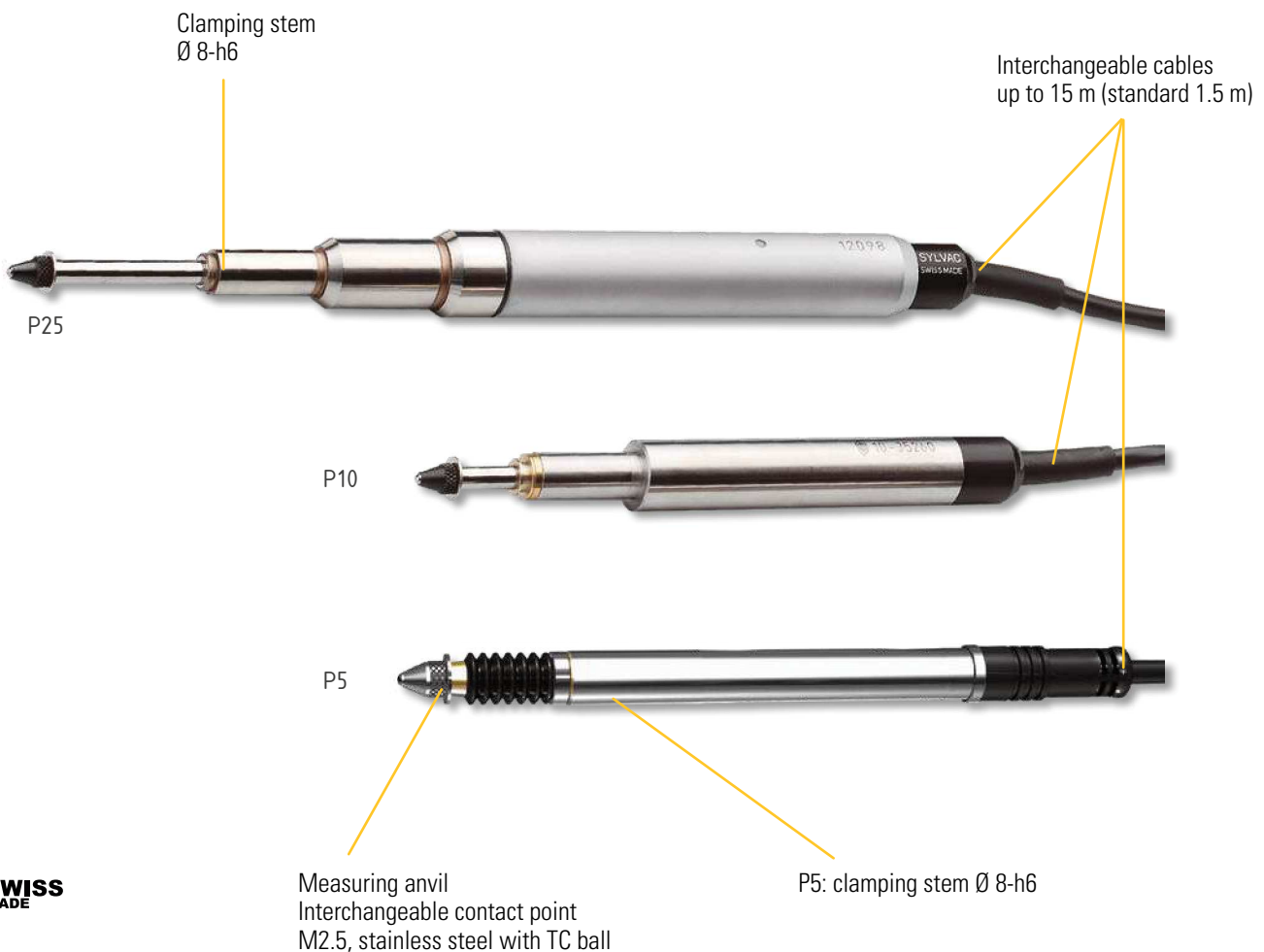




Capacitive measuring probes

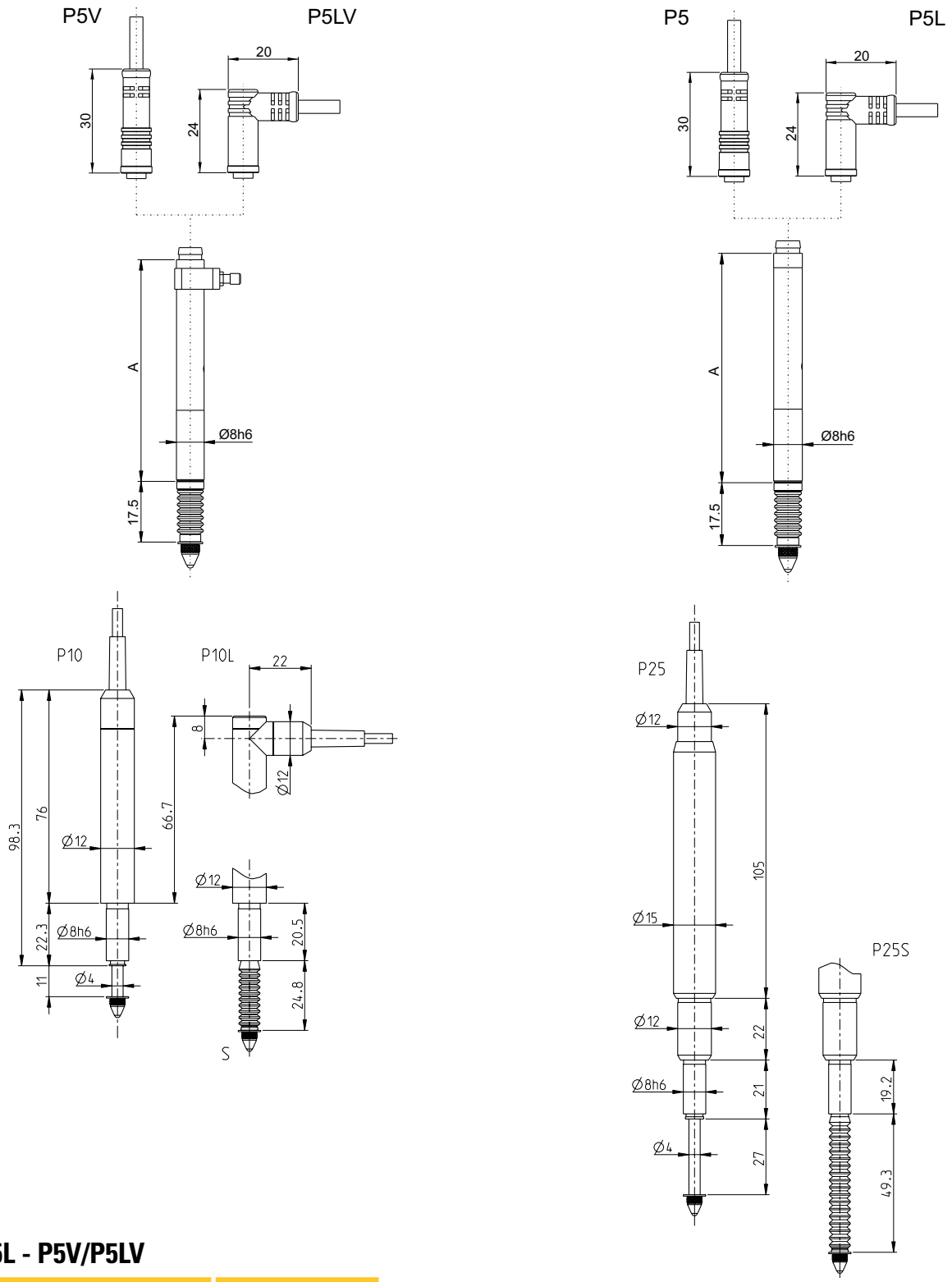
DESCRIPTION

- Capacitive measuring probes
- Measuring system for high accuracy over the entire measuring range
- Sliding bearing guide guarantees a minimum of 10 million cycles when the probe is not subjected to a lateral force. Not suitable for high load applications.
- Available in 2 versions :
 - Spring-loaded thrust
 - Spring-loaded with integrated vacuum lift (V-version)
- Measuring range 5, 10 and 25 mm
- Resolution up to 0.0001 mm (0.1 μm)
- Measuring force selectable, low, standard or high
- Fixing diameter 8 h6
- Straight or 90° cable outlet (L version)
- Interchangeable PUR cable length 1.5 m.
- IP54 protection with Viton® bellows (S version)



Capacitive measuring probes

DIMENSIONAL DRAWINGS



P5/P5L - P5V/P5LV

Guiding axis	Measure A
Plain bearing	72
Ball bearing	64

H



Capacitive measuring probes

TECHNICAL SPECIFICATIONS

		P5	P10	P25
Travel	mm	5	10	25
Pre-travel	mm	0.7	0.5	0.8
Max. Error ¹⁾	µm	1	1	1.2
Repeatability	µm	0.2	0.2	0.2
Moving mass	g	3.7	4.1	9.6

¹⁾ With Master unit. See as well the specifications of the pair Measuring probe/display unit.

MEASURING FORCE

		P5	P5B	P10	P10S	P25	P25S
Standard	N	0.50-0.90	0.50-0.90	0.60-0.80	0.70-1.25	0.60-1.00	0.65-1.4
Minimum	N	0.20-0.25*	0.25-0.50	< 0.10	---	< 0.15	---
Low	N	0.30-0.65	0.30-0.65	0.20-0.25	---	0.20-0.30	---
High	N	0.80-1.40	---	0.70-1.50	---	0.70-1.60	---

Tolerance ± 20%, measuring probe in vertical position, outgoing spindle.

* without rubber boot

LIST OF REFERENCES

		P5				P10				P25			
H	P5	900-1001	P5BV	900-1005	P10	900-1010	P10L LF	900-1014.91	P25	900-1025	P25S	900-1027	
	P5BL	900-1002	P5L	900-1006	P10 LF	900-1010.91							
	P5V	900-1003	P5BVL	900-1007	P10S	900-1012	P10LS	900-1016					
	P5B	900-1004	P5LV	900-1008	P10L	900-1014							

B = ball bearing / V = Vacuum lifter / L = 90° cable / LF = low force / S = with rubber boot

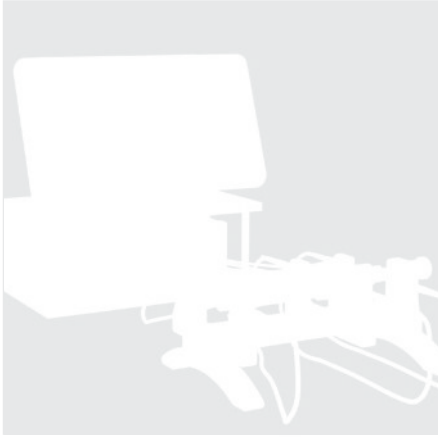
STANDARD DELIVERY

- Probe according to technical specifications
- Calibration certificate
- Cable 1.5 m
- Stainless steel contact point with tungsten carbide ball Ø 2 mm (905-2204)



Capacitive measuring probes

APPLICATIONS



P5 probes connected to a D302 coupled with D300S for OD, concentricity and cylindricity measurements



P5 probes connected to a D50S unit measuring the external diameter of a shaft



Combined probes for the measurement of several heights



Capacitive probes connected to a D70S.



Capacitive probes connected to a D200S

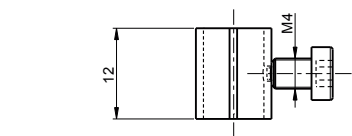
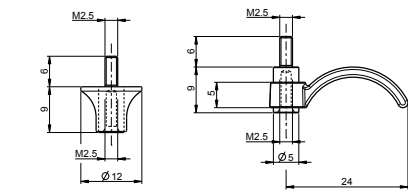
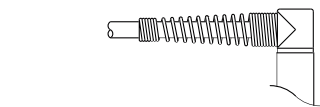
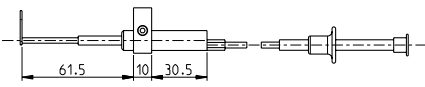
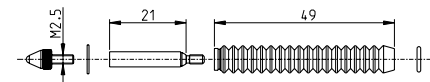
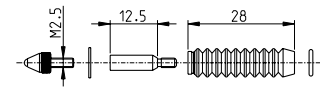
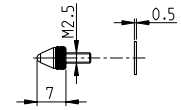


Capacitive probes on a jig



Measuring probes

ACCESSORIES



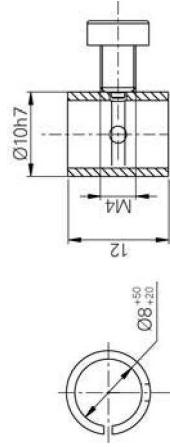
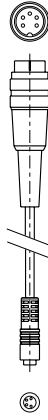
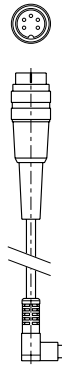
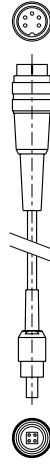
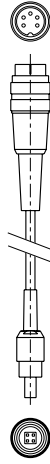
		P2i	P2iP	P5i	P5iP	P2	P5	P10	P25	P12D
905-2204	Stainless steel contact point M2.5 with TC ball probe (other contact points, see chapter digital indicators)					•	•	•	•	•
901-2003	Rubber boot and contact point set							•		
901-2004	Rubber boot and contact point set								•	
901-2005	Lifting device with photo-cable							•	•	•
901-2012	Tube Ø 4 mm / 2 mm, Length to be specified						•	•	•	
901-2013	Tube Ø 6 mm / 4 mm, Length to be specified						•	•	•	
901-2014	Double tube diameter 2 x 4 mm / 2 mm, Length to be specified						•	•	•	
901-5110	Bridle 90°	•		•						
905-2225	Plastic lifting ring (bottom)	•	•	•	•	•	•	•	•	•
905-2224	Plastic lifting lever (bottom)	•	•	•	•	•	•	•	•	•
905-2231	Sleeve Ø8 -->10mm with locking screw	•	•	•	•	•	•	•	•	•



Measuring probes

ACCESSORIES

	P2!	P2!P	P5!	P5!P	P2	P5	P10	P25	P12D
901-5002							•		
901-5012								•	
901-5032							•		
901-5042						•			
901-5052						•			
905-2231						•	•	•	•
801-5101									•
801-5202									•
801-5210									•



H