

A Sylvac softwares

DATA TRANSFER

SYLCOM

Sylcom is the latest software product to be launched by Sylvac and has been designed to process information from instruments connected via Bluetooth® Wireless technology or via a USB cable. It creates an almost limitless number of display channels spread over one or several pages. Several display modes are available so that the status of the variable measured (GO/NG) can be visualised instantaneously. Sylcom can also be used to measure components sequentially, to collect all values simultaneously and to define a time interval in order to save values automatically. The data can be saved in Sylcom and then exported to an Excel file.

The concept is to offer a modular software application based on the specific functionalities required.

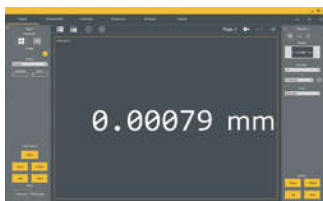


Free Sylcom LITE version on www.sylvac.ch

A free version **Sylcom Lite**, limited to one connection can be downloaded free of charge from our website. The full version of **Sylcom Standard** with the capacity to connect up to 16 instruments and the **Sylcom Advanced** version with the capacity to connect up to 250 instruments (max. 40 instruments with Bluetooth® Wireless technology with advanced functions and connections to M-Bus modules) can be purchased online from our website or from the Sylvac distributor in your country. Further modules will be available in the future to expand the possible uses of Sylcom.

Your metrology partner for the new challenges ahead!

We hope that all the in-formation described above has convinced you that Sylvac is not only a manufacturer of innovative and high-quality measuring instruments but also the partner you need to help your quality control evolve towards the new industrial model that awaits us.



Channel display



Multi-channel display with colour-coded tolerances



Multi-channel analogue display

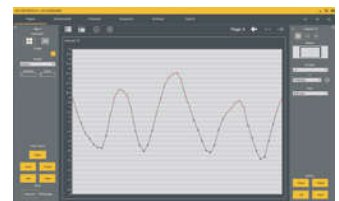


Chart display

Softwares SYLCOM	Order number
Sylcom LITE	FREE
Sylcom Standard (Dongle licence)	981.7132
Sylcom Standard (Digital licence)	981.7129
Sylcom Advanced (Dongle licence)	981.7133
Upgrade Sylconnect to Sylcom*	981.7139

Accessories	Order number
Dongle Smart	981.7100
USB pedal	926.7020
USB pedal robust	926.7021
Footpedal Smart	926.7022

* contact us to get the procedure for the update

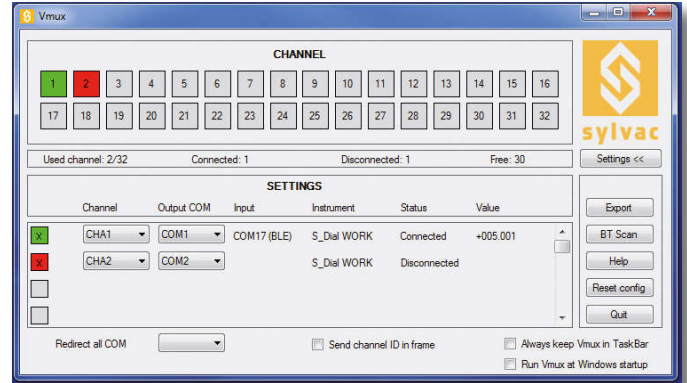
Applications

DATA TRANSFER

Vmux

This software may be considered as a virtual interface which assigns a COM port to instruments connected by wireless Bluetooth® transmission or by USB cable and then redirects the values from these instruments to any Windows software (SPC or other).

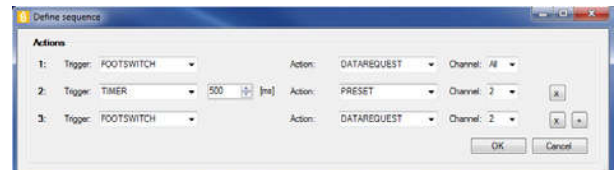
For the simplest applications Vmux simply exports the values into a selectable Excel file. Extremely user-friendly, Vmux is an excellent replacement for the multiplexer boxes used in the past.



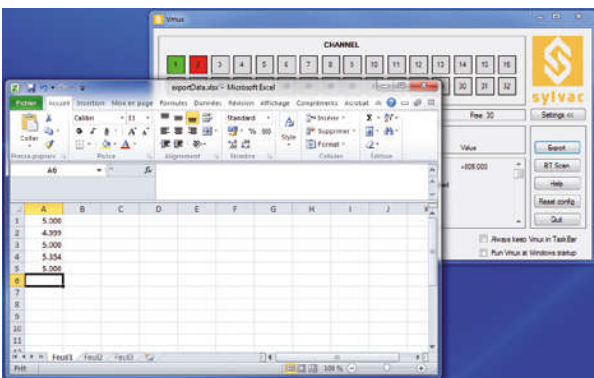
A free version Vmux Lite, limited to one connection can be downloaded free of charge from our website. The full version of Vmux with the capacity to connect up to 32 instruments (max. 16 instruments with wireless Bluetooth® transmission) can be ordered from the Sylvac distributor in your country.



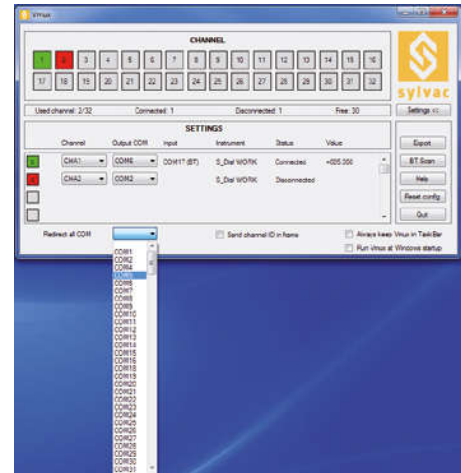
Basic display



Defining a sequence



Exporting data in Excel®



Port COM changing



Softwares Vmux	Order number
Vmux LITE	FREE
Vmux	981.7161

Try the free version Vmux LITE available on our website www.sylvac.com

Accessories	Order number
Dongle Smart	981.7100
USB pedal	926.7020
USB pedal robust	926.7021
Footpedal Smart	926.7022

A Applications

DATA TRANSFER

Sylvac Smart App Android & Apple

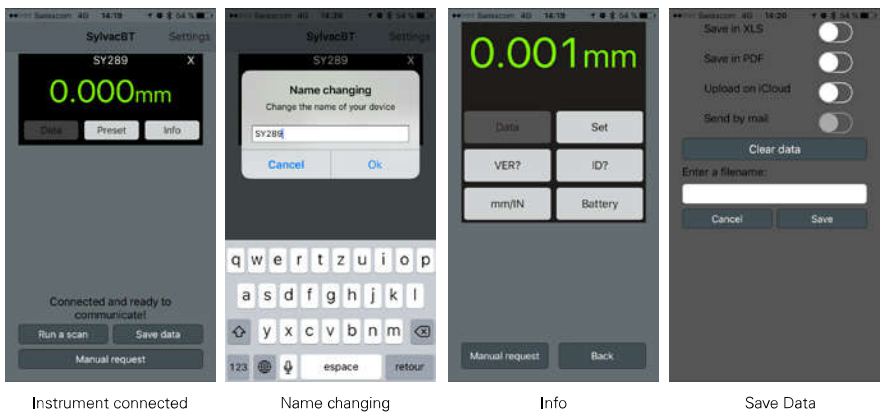
Enables the display of data from instruments with *Bluetooth®* wireless technology on touchpads and smartphones Android from 4.3 version and Apple from IOS7, equipped with *Bluetooth®* wireless technology.

Ability to save data on the touchpad or smartphone into a PDF or Excel and export the data in Google Drive or iCloud.

Available for free on the Google Play Store and the App Store.



Usable only with Sylvac instruments with Bluetooth® technology in "simple" profile.



No dongle required !



Various softwares

OVERVIEW OF SOFTWARE AND FUNCTIONS

	SYLCOM					VMUX	
	LITE	Standard	Advanced Package	PRO Package	Upgrade from Sylconnect	LITE	Standard
		981.7132/29	981.7133	981.7134	981.7139		981.7161
NUMBER OF INSTRUMENTS							
Max. 1	•					•	
Max. 16		•		•	•		
Max. 32							• ¹⁾
Up to 128			• ²⁾				
PLATFORMS							
Windows 7	•	•	•	•	•	•	•
Windows 8.1	•	•	•	•	•	•	•
Windows 10	•	•	•	•	•	•	•
Dongle required for instruments Smart	(•)	(•)	(•)	(•)	(•)	•	•
FUNCTIONS							
Export to ASCII	•	•	•	•	•		
Export to Microsoft Excel®		•	•	•	•		
Immediate export to external program	•	•	•	•	•	•	•
Communication gateway (virtual COM port)						•	•
Display value	•	•	•	•	•	•	•
Display tolerances	•	•	•	•	•		
Analogue display	•	•	•	•	•		
Chart display	•	•	•	•	•		
Multi-channel		•	•	•	•		•
Flatness and advanced formulas			•				
Inspection plan				•			
Statistics				•			
Action sequences		•	•	•	•		
User management	•	•	•	•	•		
Work menu (controlling instrument menus)	•	•	•	•	•		

¹⁾ Max. 32 USB or 16 USB and 16 instruments with Bluetooth® Wireless technology

²⁾ via Mbus (depends on hardware), max. 40 instruments with Bluetooth® Wireless technology (5 dongles)