

# Back Plunger Type Dial Gauges

0.01mm

1

- The back plunger dial gauge is characterized with easy handling since the spindle having the contact point moves in the direction perpendicular to the dial face and the gauge is more compact.
- The dial gauge of this type is convenient for use in achieving a parallelism of the table of the machine tool, with measuring jigs, in restricted areas and on locations where scale reading is difficult.



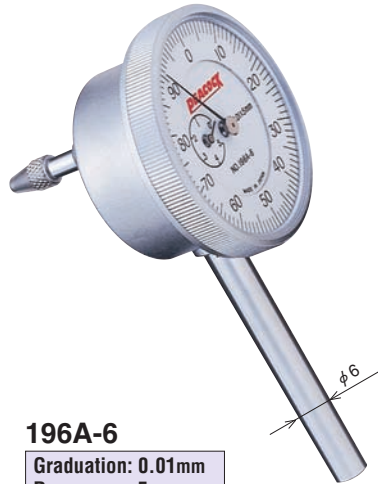
Back Plunger Type Dial Gauges



**196A**

Graduation: 0.01mm  
Range: 5mm

- Stem  $\phi$  6.35mm
- Contact point (X-1)



**196A-6**

Graduation: 0.01mm  
Range: 5mm

- Stem  $\phi$  6mm
- Contact point (X-1)



**196Z**

Graduation: 0.01mm  
Range: 0.8mm

- Stem  $\phi$  8mm
- Pointer giving less than one revolution
- Contact point (X-112)



**196B**

Graduation: 0.01mm  
Range: 5mm

- Stem  $\phi$  8mm
- Contact point (X-112)

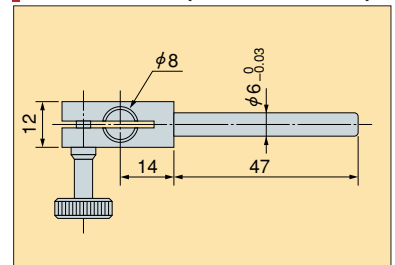


**196B-T**

Graduation: 0.01mm  
Range: 5mm

- Stem  $\phi$  8mm
- Reversed dial
- Contact point (X-112)

**Dimensions (Holder for 196B)**



## Specifications

(unit:  $\mu$ m)

Model	Graduation (mm)	Range (mm)	Reading	Indication error					Retrace error	Repeatability	Measuring force less than (N)
				1/10 revolution	1/2 revolution	One revolution	Two revolutions	Whole measuring range			
<b>196A</b>	0.01	5	0 - 50 - 100	10	$\pm 12$	$\pm 15$	$\pm 20$	$\pm 20$	6	5	1.4
<b>196A-6</b>	0.01	5	0 - 50 - 100	10	$\pm 12$	$\pm 15$	$\pm 20$	$\pm 20$	6	5	1.4
<b>196Z</b>	0.01	0.8	40 - 0 - 40	10	$\pm 12$	$\pm 15$	—	—	6	5	1.4
<b>196B</b>	0.01	5	0 - 50 - 100	10	$\pm 12$	$\pm 15$	$\pm 20$	$\pm 20$	6	5	1.4
<b>196B-T</b>	0.01	5	100 - 50 - 0	10	$\pm 12$	$\pm 15$	$\pm 20$	$\pm 20$	6	5	1.4

※ Dial dia.  $\phi$  38mm (All Back Plunger type Dial Gauges)